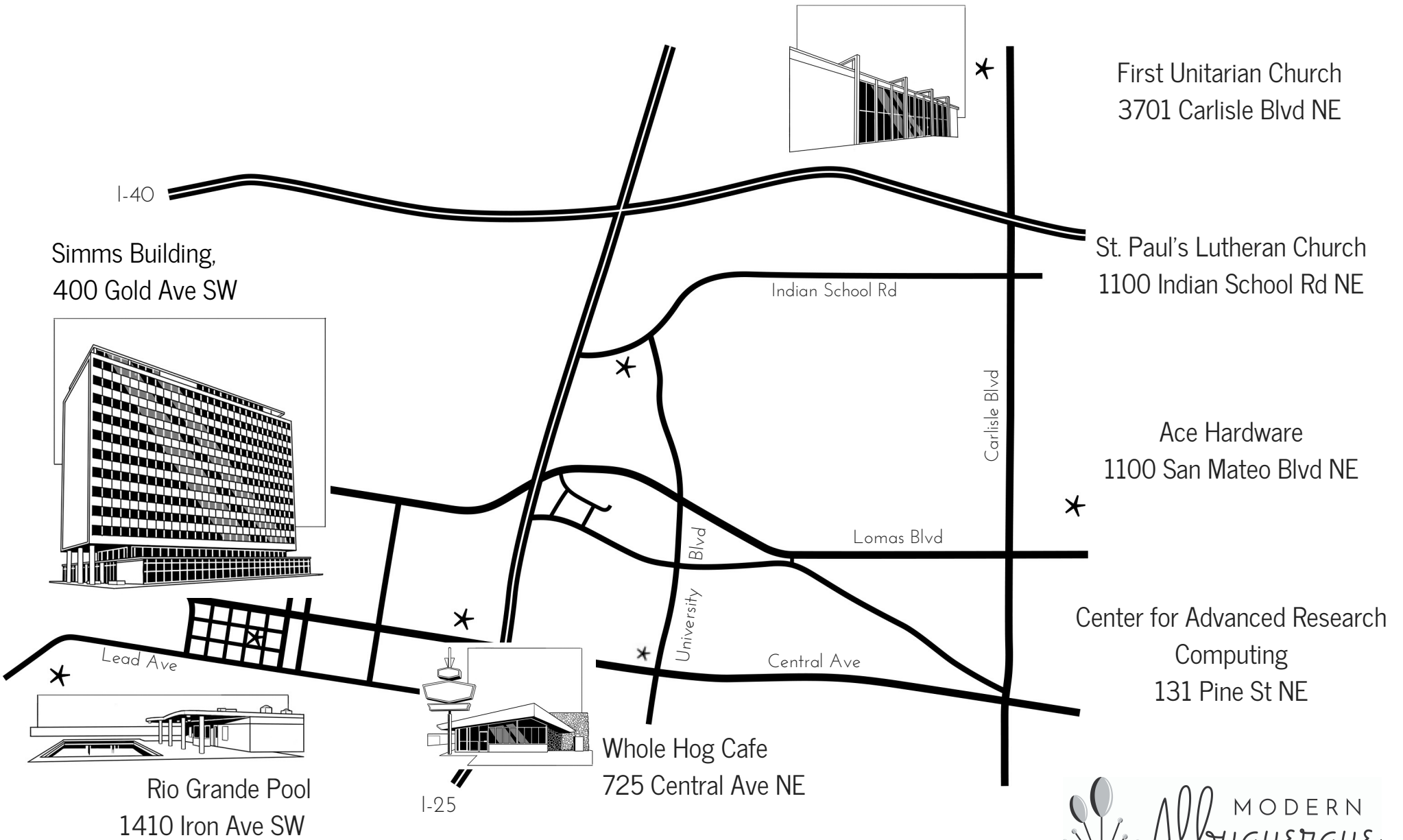
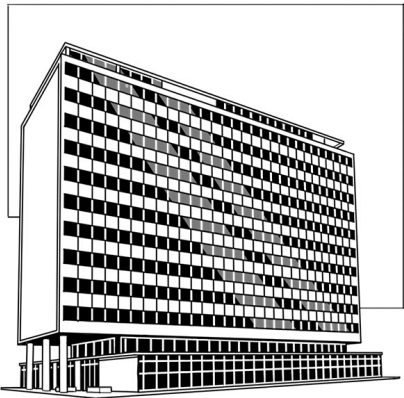


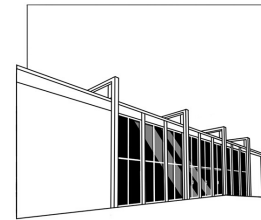
# MUST-SEE MODERNISM



Simms Building,  
400 Gold Ave SW



First Unitarian Church  
3701 Carlisle Blvd NE

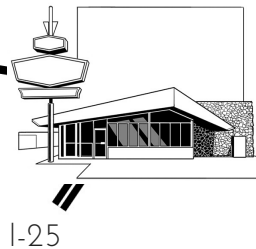


St. Paul's Lutheran Church  
1100 Indian School Rd NE

Ace Hardware  
1100 San Mateo Blvd NE

Center for Advanced Research  
Computing  
131 Pine St NE

Whole Hog Cafe  
725 Central Ave NE



Rio Grande Pool  
1410 Iron Ave SW

Placement of sites on map is approximate. Please use provided addresses.



TOURS . EVENTS . MODERNISM

[www.modernabq.org](http://www.modernabq.org)

## Rio Grande Pool

1410 Iron Ave SW

This city pool was designed by Albuquerque architects Flatow and Moore and opened to the public in 1959. The organic curves in the building's roofline are broadly echoed in the abstract shaped shallow pool nearest the street. From the parking lot, turn around to see the 1962 high-rise Alcalde West Apartments tower, designed by Ann Hebenstreit and advertised as the city's first 'elevated subdivision'.

## Simms Building

400 Gold Ave SW

The International-style skyscraping Simms Building also designed by Flatow and Moore was finished in 1954. It was photographed by Julius Shulman for a 1955 issue of Progressive Architecture and added to the National Register of Historic Places in 1998. Step inside to view the lobby and a small exhibit on the building's history.

## Whole Hog Cafe

725 Central Ave NE

This 1964 boomerang-roofed Googie diner originated as a Denny's designed by the Los Angeles architectural firm of Armet and Davis.

## St. Paul's Lutheran Church

1100 Indian School Rd NE

This expressionist style church was designed by Flatow, Moore, Bryan, & Fairburn in 1971. The brick, triangular sanctuary building was heralded as a dramatic new landmark for the city when it opened.

Visitors are welcomed at the 9:30 AM Sunday services in the modern sanctuary.

# MUST-SEE MODERNISM

## Center for Advanced Research Computing

131 Pine St NE

This former Galles Motor Company is now part of the University of New Mexico campus. Designed by Albuquerque architect William Burk Jr. in 1948 and completed in 1955, it is one of the first postwar modern structures in the city. On its Central-facing facade in Arizona stone are the badges of the car makers whose vehicles were sold at the dealership. This sculptural detail was added by the architect, a trained sculptor.

## First Unitarian Church

3701 Carlisle Blvd NE

A rare example of Miesian modernism in Albuquerque, this sanctuary was designed by Harvey Hoshour in 1964. Hoshour had the opportunity to work with Mies van der Rohe in Chicago before moving to the southwest. To see the structure, turn left onto Comanche Rd and make another left into the church's parking area. A new sanctuary sits just north of the original, which now functions as a social hall. It is an early highlight of Hoshour's distinguished career.

## Ace Hardware

1100 San Mateo Blvd NE

The former Kistler-Collister department store (below left) opened in 1962 is attributed to Albuquerque architect William Ellison, however, famed Los Angeles architectural firm Welton Becket & Associates provided design consultation. Two cantilevered display windows depicted in the drawing have since been remodeled, however, the original cantilevered entrance canopy and precast concrete panels with a diamond-relief pattern remain.

Want more modernism?  
Find us on Instagram!  
[modernalbuquerque](#)

